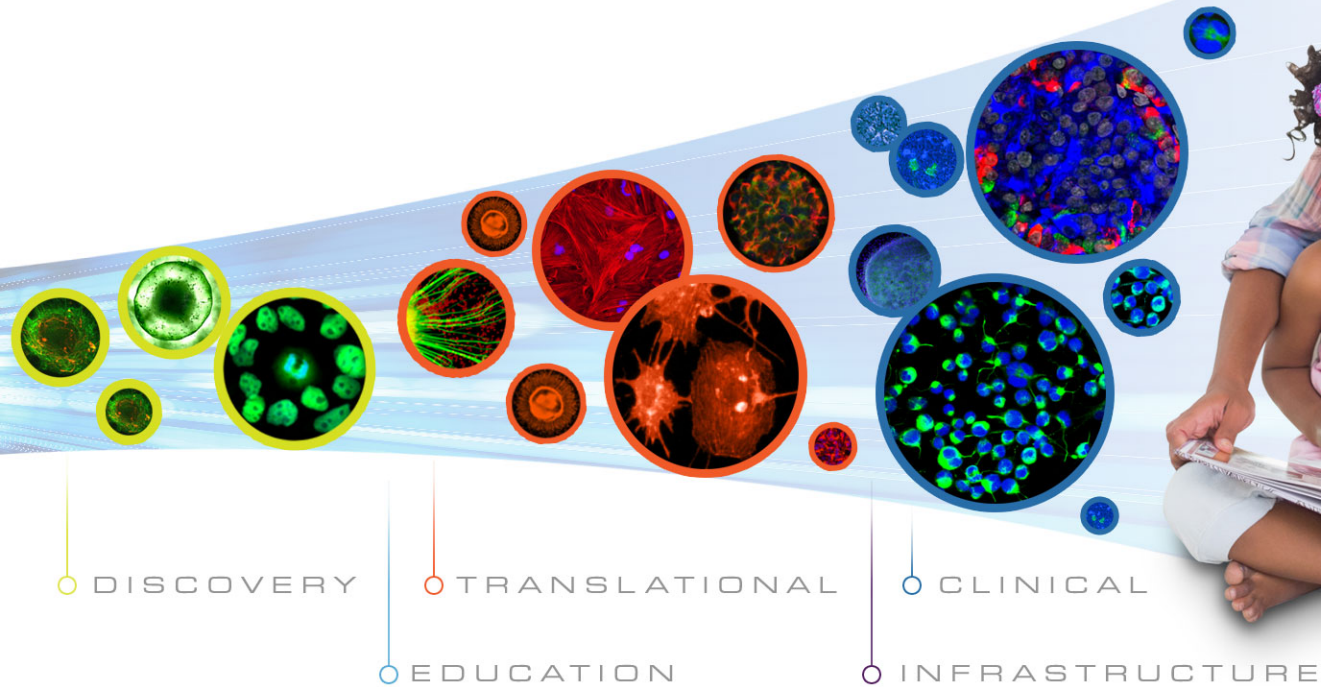


May 21, 2015

CIRM

CALIFORNIA'S STEM CELL AGENCY



Strategic Planning

C. Randal Mills, Ph.D.

President and Chief Executive Officer
California Institute for Regenerative Medicine

Strategic Planning – Why Do It?

Provides Situational Awareness

- A unique time to reevaluate everything
- Consider outside-the-box ideas

Creates Organizational Clarity

- Provides a clear vision
- Sets priorities
- Establishes direction that is actionable
- Enables alignment

Sets Measurable Goals

- Allows tracking of progress
- Course correction if necessary

A Few Thoughts

- Almost anything is open for consideration (*except change just to say we've changed*)
- Strategic Planning is not a transcript of a whiteboard from a brain storming session – focus is essential
- We've just changed some things and are about to change even more of CIRM
- We have both limited time and enough time (*it's the second half, but not the final 2 minutes*)

The Strategic Planning Process

Where are we now?

- Confirm mission
- Confront brutal facts
- Evaluate environment factors

Where do we want to go?

- Brainstorm options
- Benchmark
- Create a unique vision of “Great”

How do we get there?

- Evaluate strategic options
- Establish milestones
- Document the plan

Strategic Planning Process

The Process Requires

- Input
- Formulation
- Deliberation
- Ultimate Conviction



BOARD SURVEY

Board Survey Questions

Where are we now?

- Q1 - Confirming the CIRM mission
- Q2 - Is CIRM focused enough
- Q4 - Most important impediments to success

Board Survey Questions

Where do we want to go?

- Q6 - Single most important goal in the next 5 years
- Q9 - What metrics define success
- Q12 - What can CIRM become great at

Board Survey Questions

How do we get there?

- Q3 - Fund projects that can be funded elsewhere
- Q5 - Development stage focus
- Q7 - Attributes most important for success
- Q8 - Risk tolerance
- Q10 - Therapeutic area focus



WHERE ARE WE NOW?

Q1 - Mission

Do you agree that the mission of CIRM should be “to accelerate stem cell therapies to patients with unmet medical needs”?

Yes

100%
(23/23)

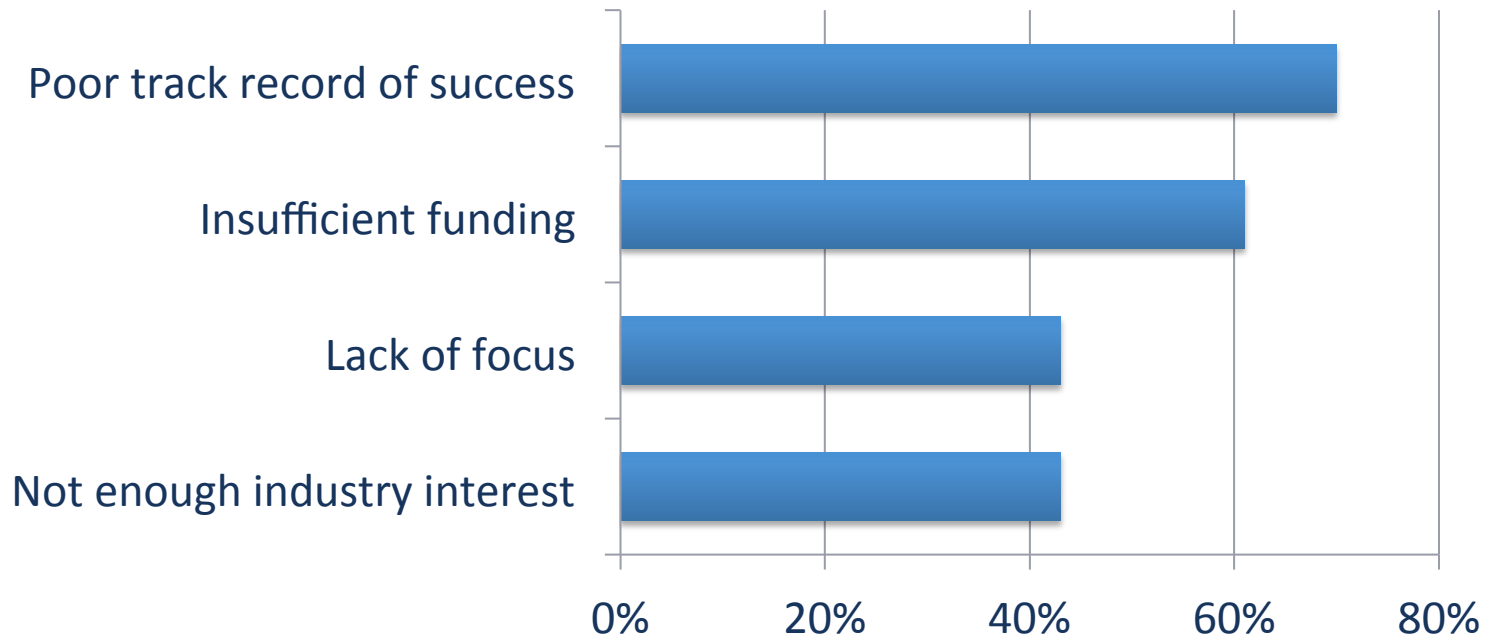
Q2 – CIRM Focus

Do you think we are focused enough to achieve our mission?

Yes
91%

Q4 – Biggest Impediments

Identify what you think are the 3 most pressing impediments to accelerating stem cell therapies to patients with unmet medical needs.



Q11 – CIRM Duration

In developing this strategic plan, CIRM should assume that the agency will:

Receive additional
funding

78%

Sunset

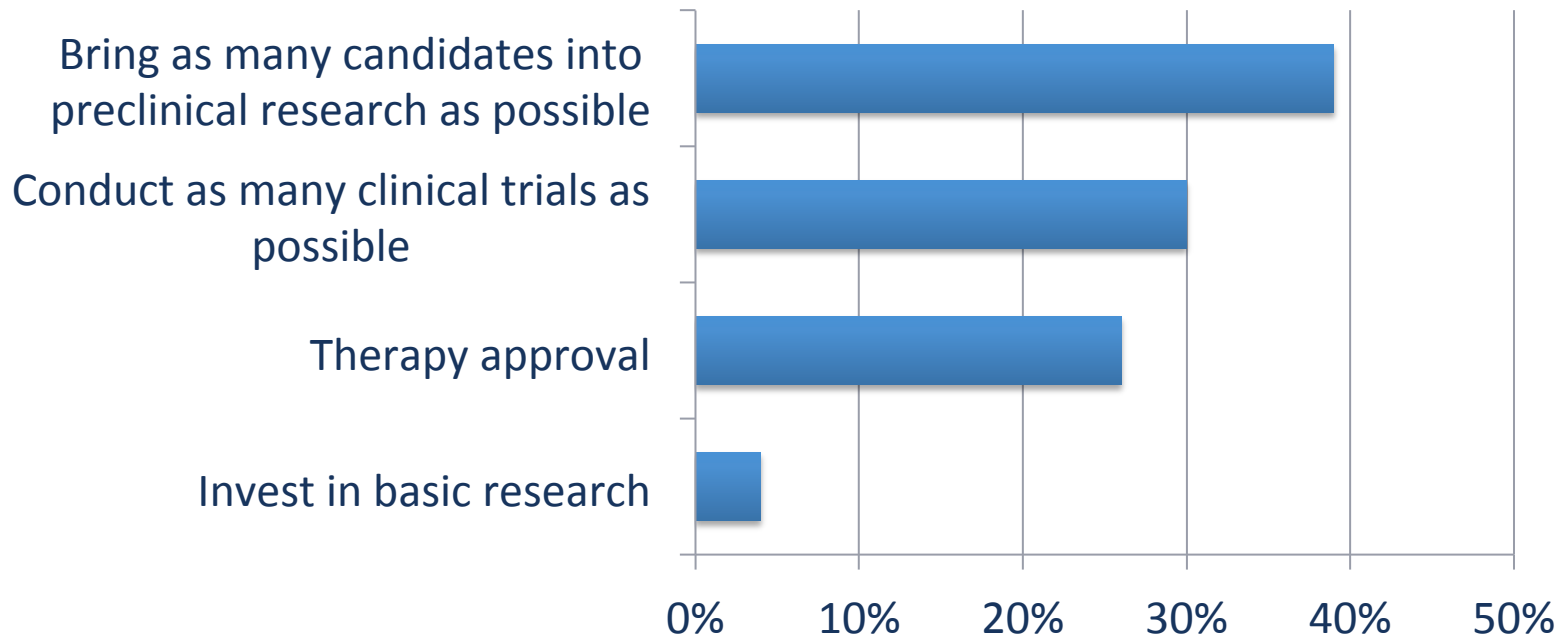
22%



WHERE DO WE WANT TO GO?

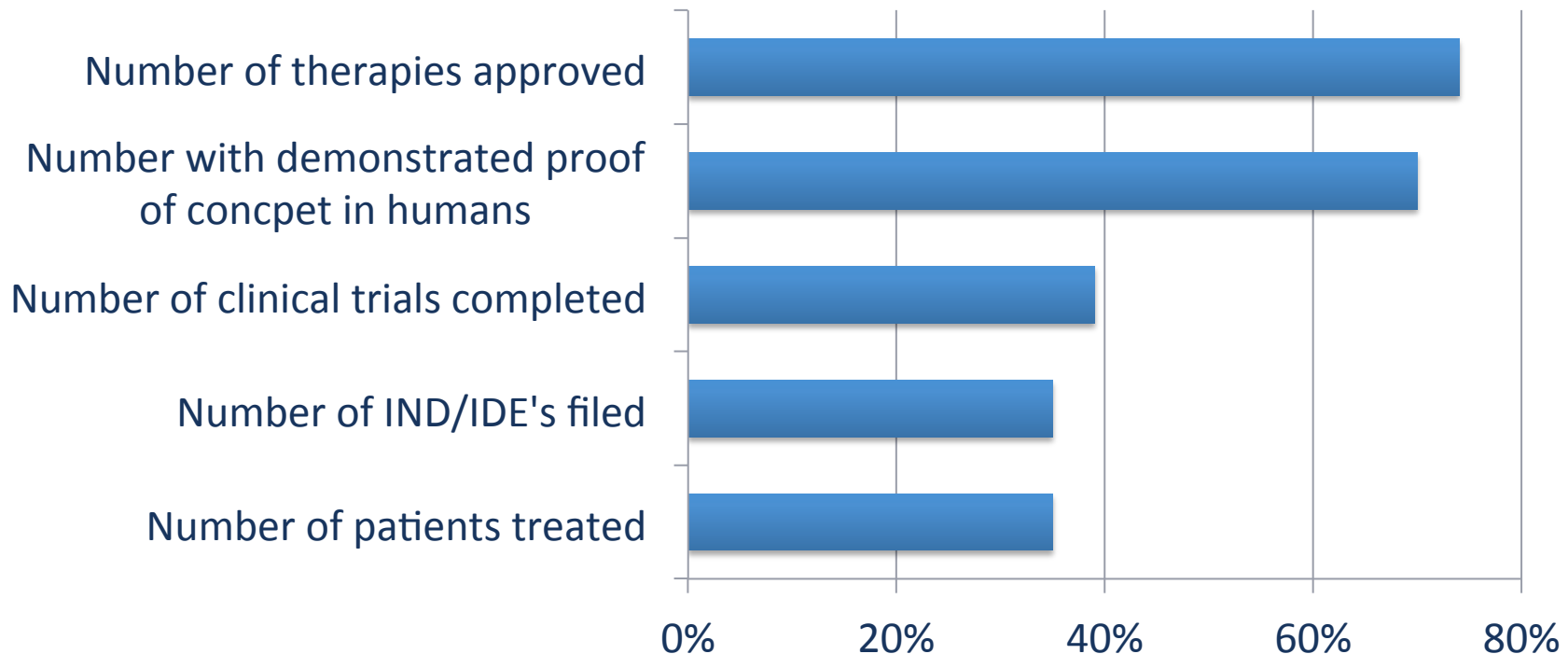
Q6 – Most Important Goal

Which of the following do you consider to be the single most important goal for CIRM over the next 5 years?



Q9 – Metrics for Success

Identify the top 3 metrics you would use to define success in achieving the CIRM mission.

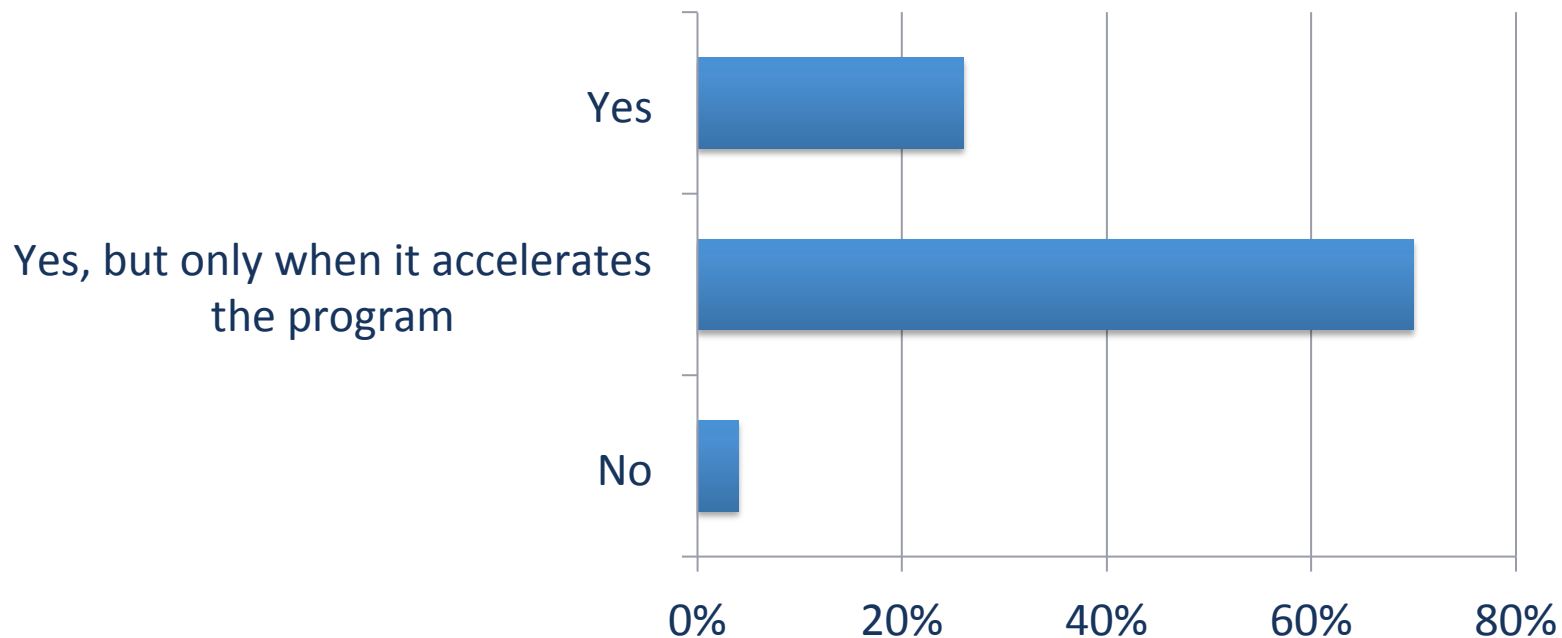




HOW DO WE GET THERE?

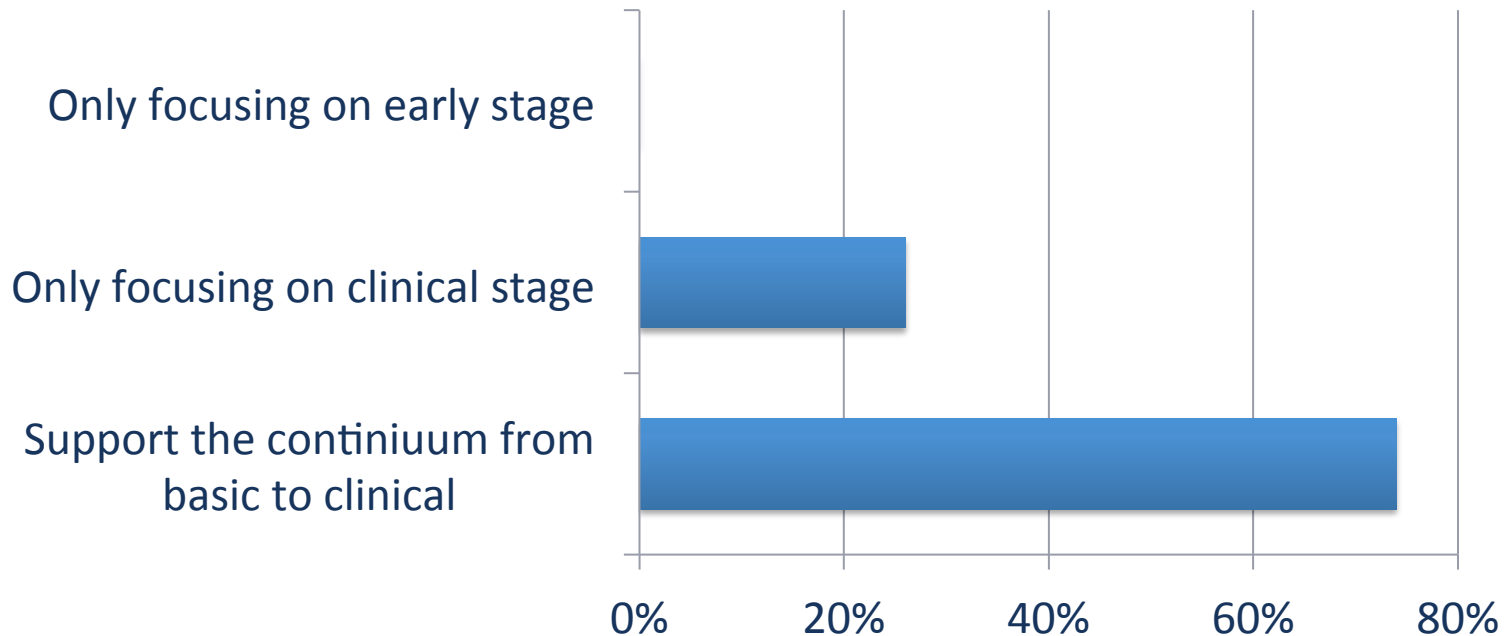
Q3 – Funding Available Elsewhere

Should CIRM fund programs that can be funded from other sources?



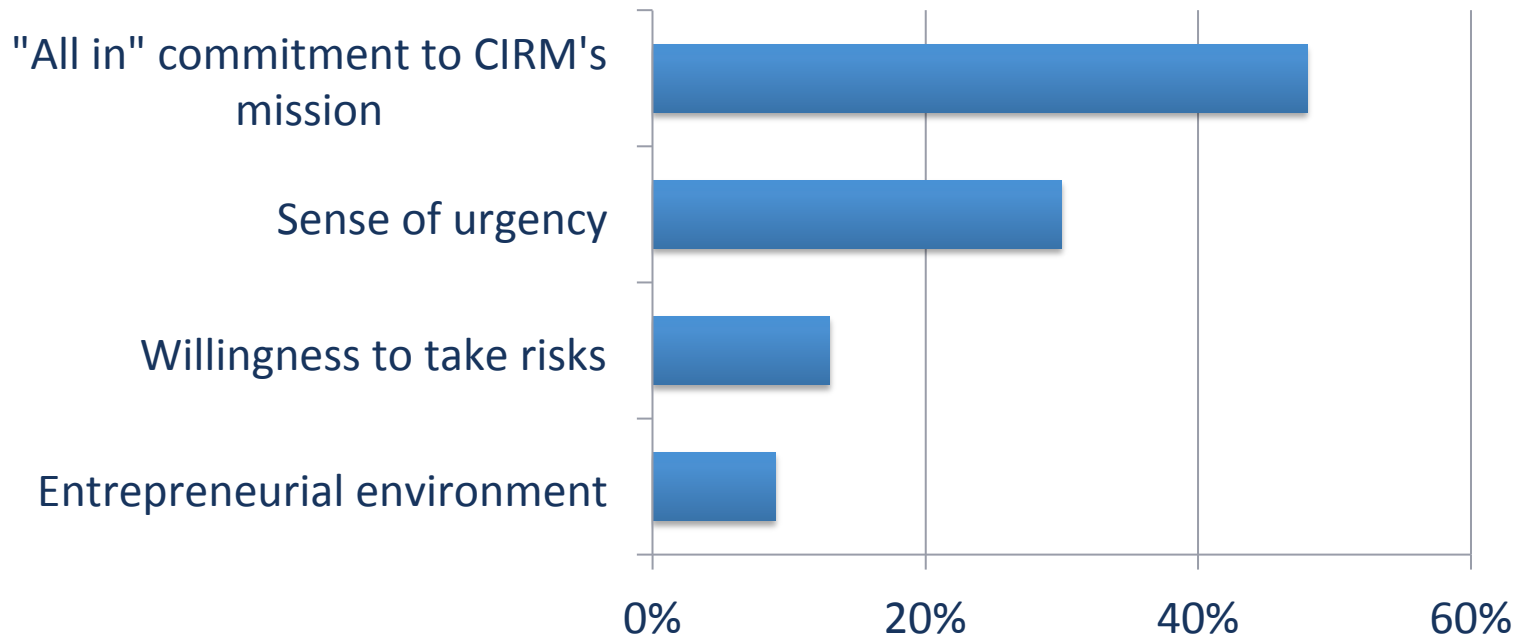
Q5 – Development Stage Area of Focus

Our mission of accelerating stem cell therapies to patients with unmet medical needs is best served by:



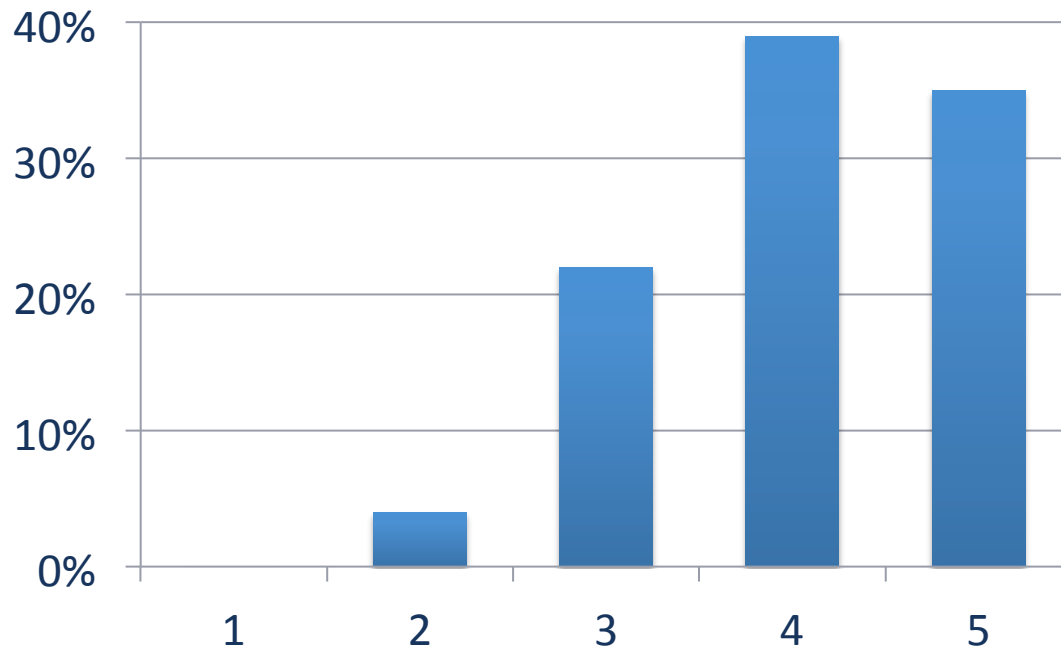
Q7 – Attribute for Success

In addition to upholding the highest ethical standards and being good stewards of the taxpayers' money, which single attribute do you believe would have the biggest impact on CIRM's success?



Q8 – Risk Tolerance

What should CIRM's risk tolerance be for the success of any given project on a scale of 1 to 5?



Q10 – Stem Cell Focus

Should CIRM focus on:

Stem cell-
dependent
therapies

78%

Meeting unmet
needs regardless
of approach

22%



QUESTIONS / DISCUSSION?

CIRM
CALIFORNIA'S STEM CELL AGENCY

