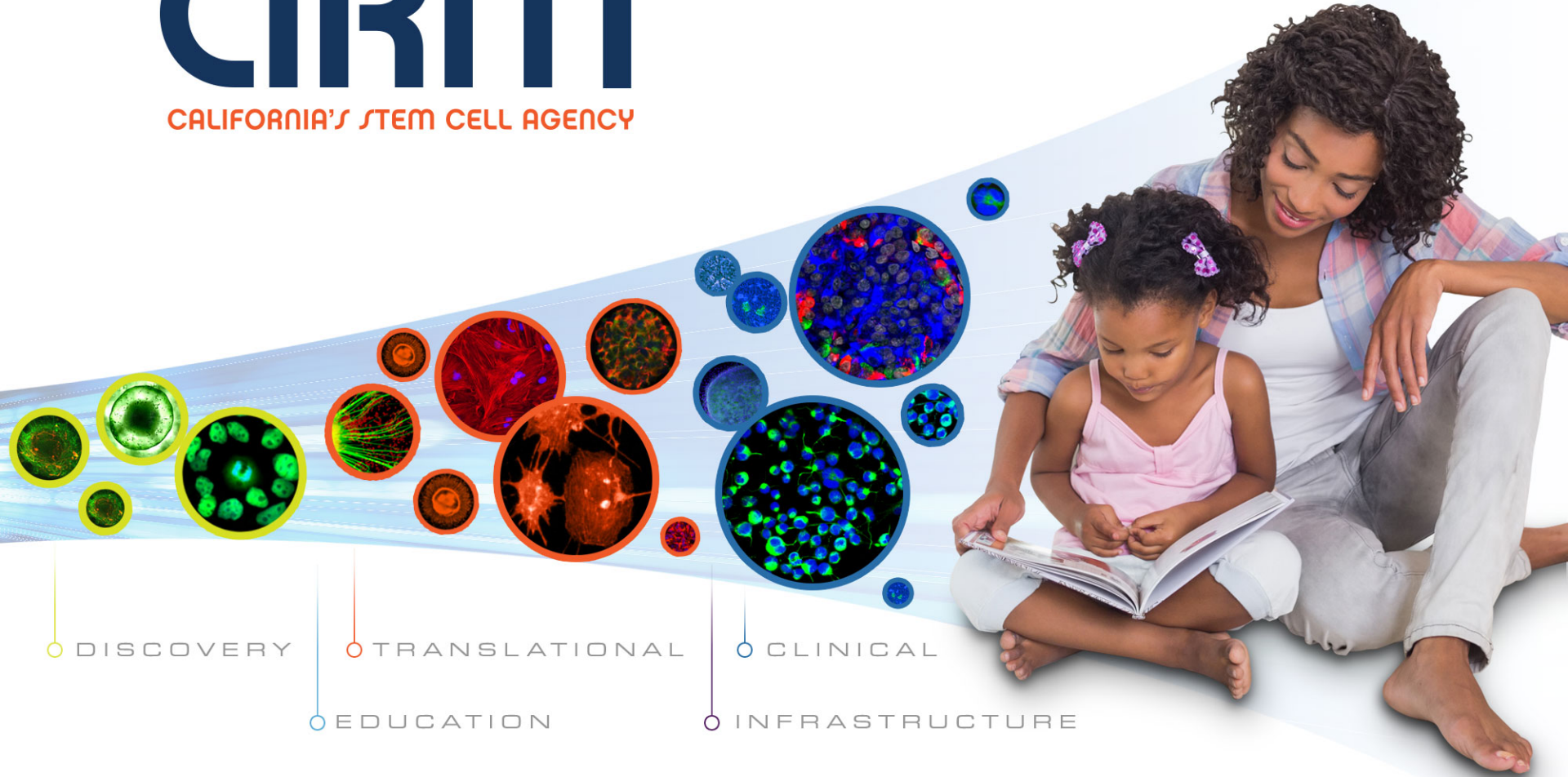


# CIRM

CALIFORNIA'S STEM CELL AGENCY



○ DISCOVERY

○ TRANSLATIONAL

○ CLINICAL

○ EDUCATION

○ INFRASTRUCTURE

**Grants Administration Policy (GAP)**  
**for Discovery, Translation and Education Projects**

**Gabe Thompson**  
**Director of Portfolio Operations and Performance**

# GAP for Discovery, Translation & Education

## References to CIRM Programs:

- CA & Non-CA Organization Eligibility
- Loan Election Policy cross-reference
- Progression Award mechanism

## Technical Changes:

- Accrued interest on CIRM funds
- Unallowable Project Costs
- Allowable Facilities Costs
- Prior Approval for Change of Project Manager
- Public Summary of Progress
- Training Grants changes