

Funds Available for Grants & Loans:



	Estimated Funds Available
Total Prop 71 Bond Funding	\$ 3,000,000,000
Less: Issuance Costs & Capitalized Interest	<u>(40,000,000)</u>
Amount Available for Grants/Loans & Administration	2,960,000,000
Projected Amount Committed /Allocated through June 2009	<u>\$ (1,029,314,346)</u>
Funds Available for Grants/Loans & Associated Administration	\$ 1,930,685,654



Funds Committed And Allocated As Of August 2008



Approved Grants as of August 2008: \$614,314,346

Allocated for Tools & Technologies Awards: \$20,000,000

Allocated for Early Translational Research Awards: \$60,000,000

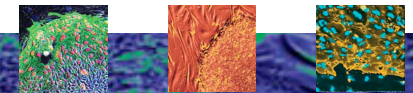
Allocated for Research Training II: \$48,000,000

Allocated for Bridges to Stem Cell Research Awards: \$18,000,000

Estimated Allocation for Disease Teams: \$210,000,000

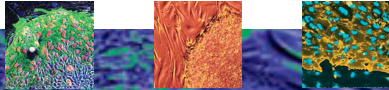
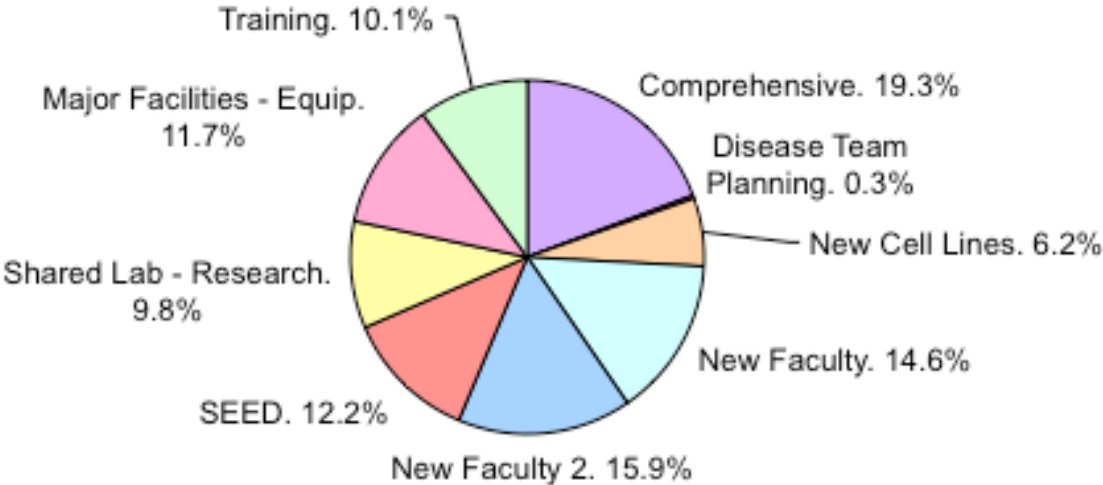
Associated Grants/General Administration: \$59,000,000

TOTAL \$1,029,314,346



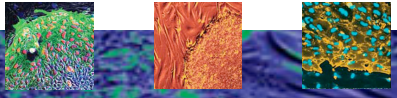
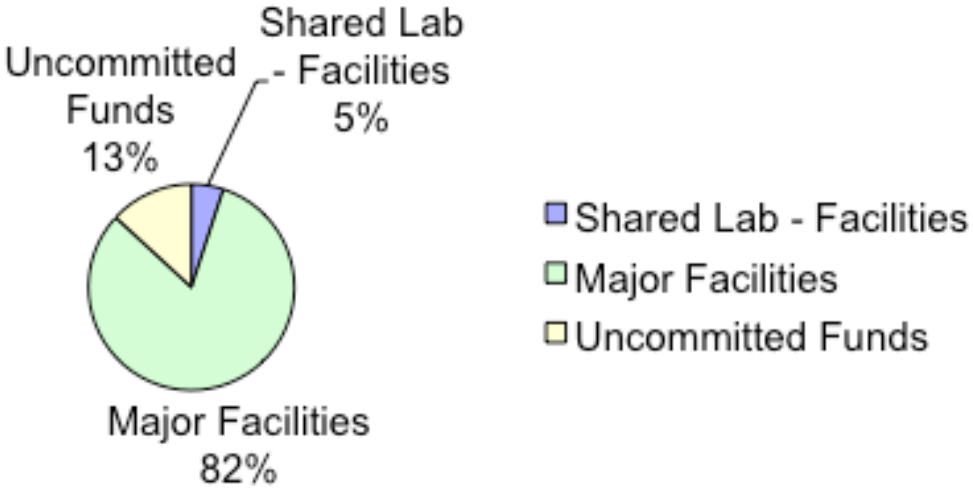
CIRM Research Funds

CIRM Research Funding As of 8/15/08 Total Committed: \$372,900,000



CIRM Facilities Funds

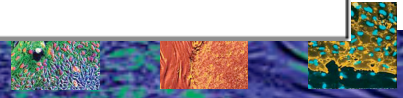
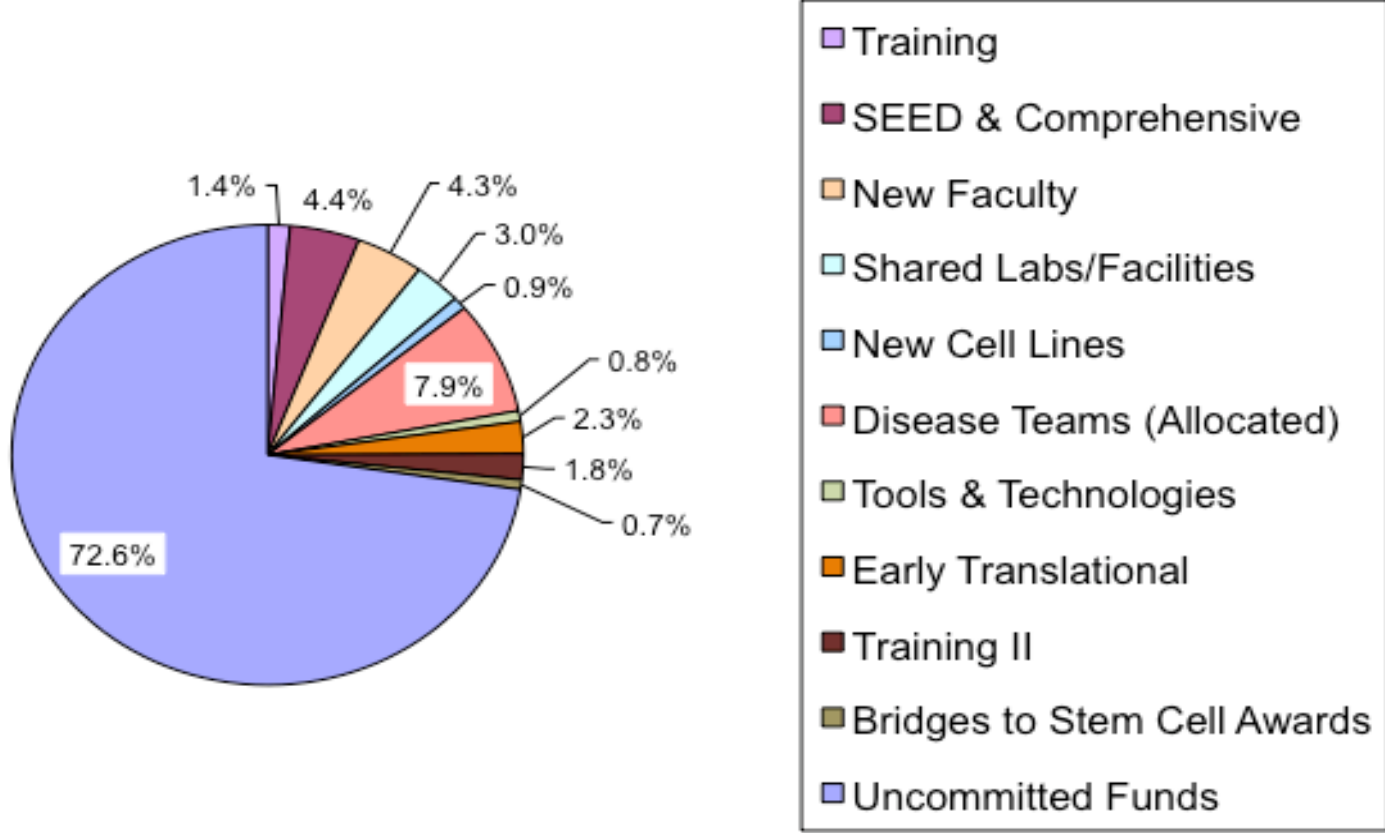
CIRM Facilities Funds as of 8/15/08
Total Available \$278,000,000



CIRM Research Funds – Total Available Funds \$2,502,000,000



CIRM Research Funding As of 8/15/08 Total Available Funds: \$2,502,000,000



CIRM Estimated Commitment Flows



<u>Fiscal Year</u>	<u>2004-2009</u>	<u>2009-2010</u>	<u>2010-2011</u>	<u>2011-2012</u>	<u>2012-2013</u>	<u>2013-2014</u>	<u>2014-2015</u>	<u>2015-2016</u>	<u>2016-2017</u>	<u>TOTAL</u>
Commitments (in millions)	(\$1,029)	(\$310)	(\$310)	(\$310)	(\$310)	(\$310)	(\$310)	(\$310)*	(\$310)*	(\$3,509)

***Note:**

FY 2015-2016 – Includes estimated \$210 million recovery from loan proceeds committed in FY 2009-2010 including principal, interest, and stock warrants.

FY 2016-2017 – Includes estimated \$300 million recovery from loan proceeds committed in FYs 2009-2011 including principal, interest, and stock warrants.

This assumes approximately \$150 million remaining buffer from the loan program and funds shown for 2015-2017 may actually be received through 2020 and a bridge funding mechanism could be put in place to permit advancing those funds in the 2015-2017 period.

Actual disbursements of funds may occur 2-3 years later for the average funding advance.

