

**CIRM**  
CALIFORNIA INSTITUTE FOR REGENERATIVE MEDICINE  
*The state stem cell agency*

**Development Portfolio Review**

**June 2010**

*Patricia Olson, Ph.D.*  
*Executive Director, Scientific Activities*  
*Agenda Item # 16*

6/7/10

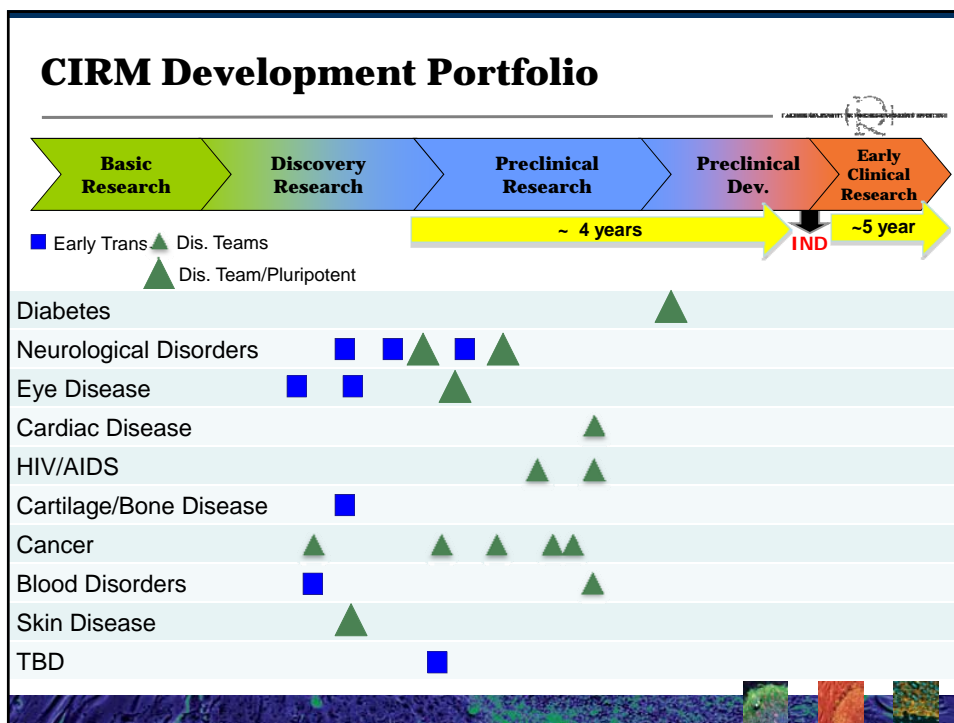
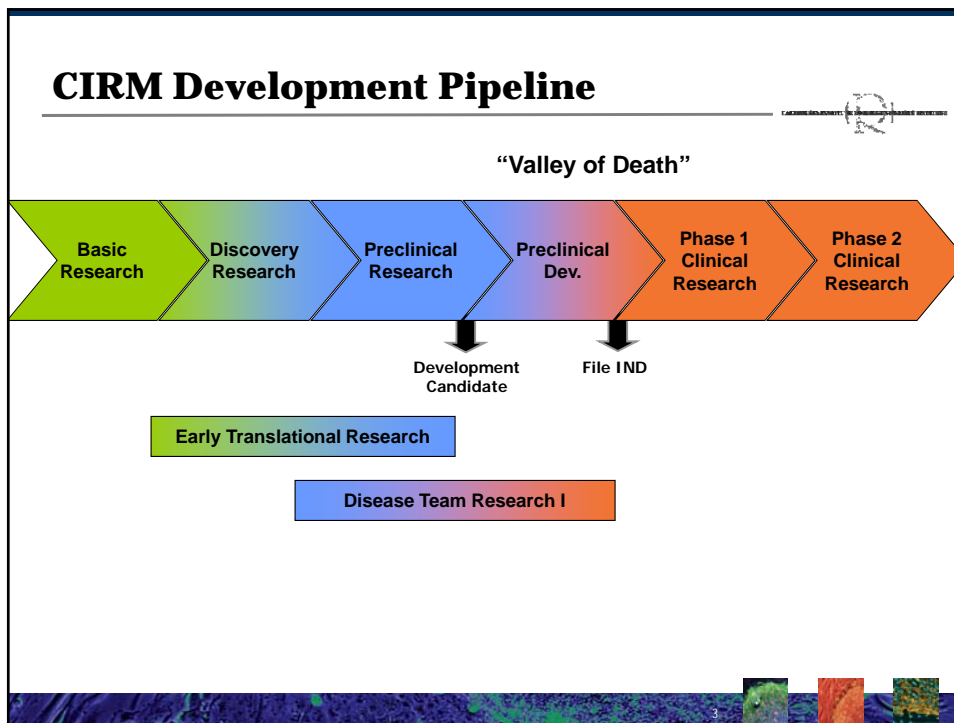
**Objectives**

---

FACILITY SECURITY & TECHNOLOGY SERVICES

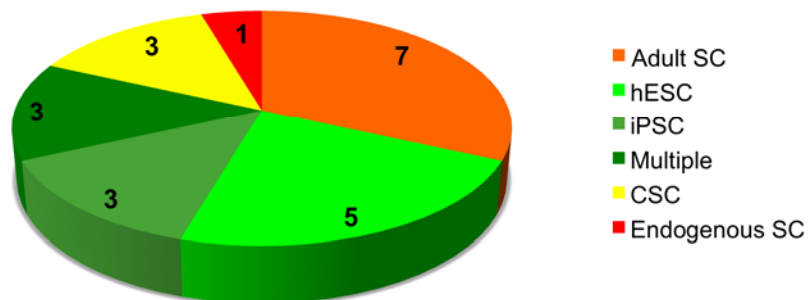
- Provide an overview of our current development portfolio
- Facilitate programmatic decision making

2

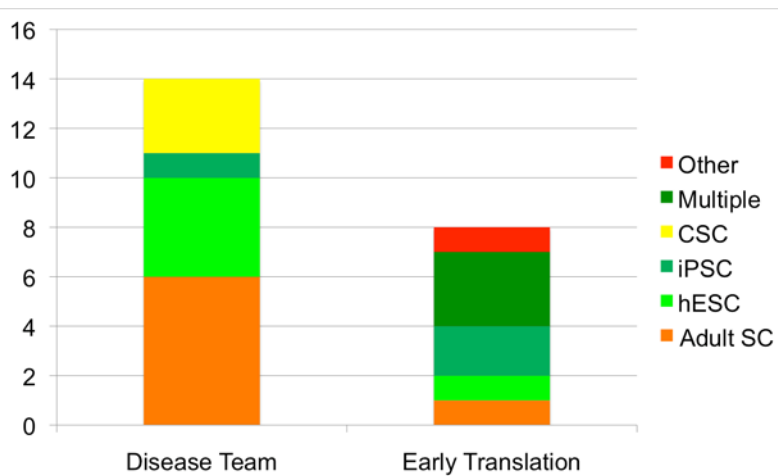


## Development Portfolio: Stem Cell Source or Target

Awards from Disease Team I & Early Translation I RFAs



## Development Portfolio: Stem Cell Source/Target

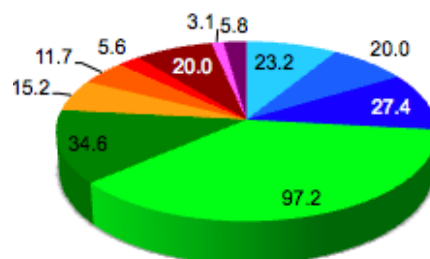


## Development Portfolio: Disease Distribution

Disease Area, # Projects



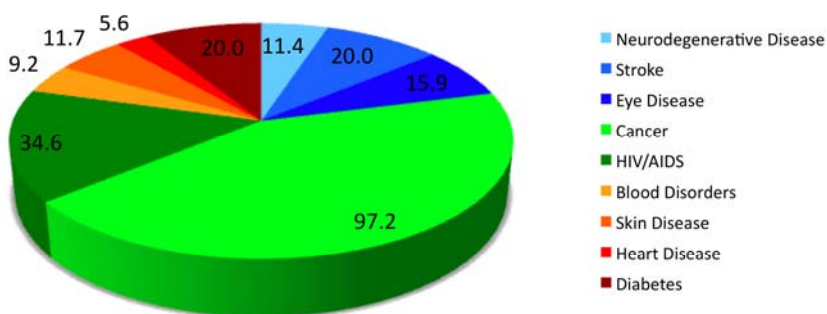
Disease Area, \$ MM



- Neurodegenerative Disease
- Stroke
- Eye Disease
- Cancer
- HIV/AIDS
- Blood Disorders
- Skin Disease
- Heart Disease
- Diabetes
- Cartilage Disease
- Multiple Indicators

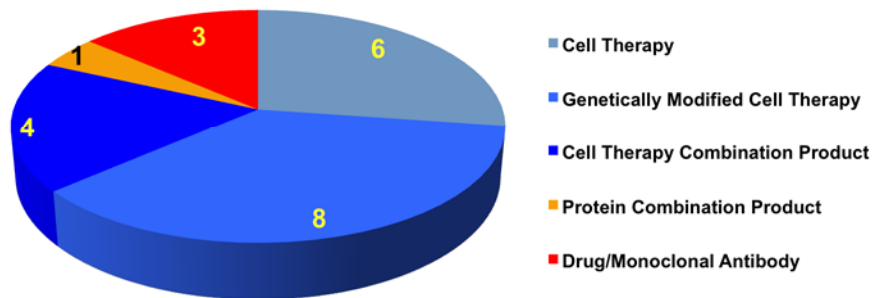
## Disease Team Awards Portfolio: Investment

Disease Area, \$ MM



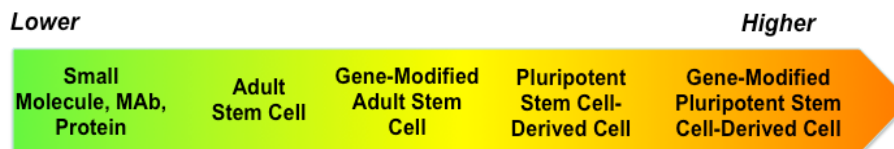
## Development Portfolio: Therapeutic Approach

### Awards from Disease Team & Early Translation RFAs



## Portfolio Considerations

- Strategic/Portfolio Focus
- Regulatory Risk



- Business model to bring to patients

### CIRM Development Portfolio: Approach (1)

□ Early Translational		△ Disease Teams			
■ Allogeneic    □ Autologous    □ Other		▲ Allogeneic    ▲ Autologous    ▲ Other			
	Small Molecule, MAb, Protein	Adult Stem Cell	Gene-Modified Adult Stem Cell	Pluripotent Stem Cell-Derived Cell	Gene-Modified Pluripotent Stem Cell-Derived Cell
Diabetes				▲*	
<b>Neurological Disorders</b>					
ALS				▲	
Stroke				▲*	
AD				■	
HD			■		
PD		■		Or ■	Or ■
Eye Disease: AMD				▲*	□
“		□	Or □		Or □
Cardiac Disease		▲			

\* Combination product

### CIRM Development Portfolio: Approach (2)

□ Early Translational		△ Disease Teams			
■ Allogeneic    □ Autologous    □ Other		▲ Allogeneic    ▲ Autologous    ▲ Other			
	Small Molecule, MAb, Protein	Adult Stem Cell	Gene-Modified Adult Stem Cell	Pluripotent Stem Cell-Derived Cell	Gene-Modified Pluripotent Stem Cell-Derived Cell
Cartilage Disease				■	Or ■
HIV/AIDS			▲		
“			▲		
<b>Cancer</b>					
Hematologic	▲				
“	▲				
Solid Tumor	▲		▲*		
“			▲		Or ▲
Blood Disorders			▲		□
Skin Disease					▲
TBD (Stroke, Heart Disease, Skin Ulcers, Fractures)	□				*Combination product

