



CIRM Facilities Working Group Status Update

**FWG Meeting
March 9, 2009**

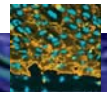
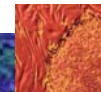
Tuesday, March 10, 2009



CIRM Shared Labs



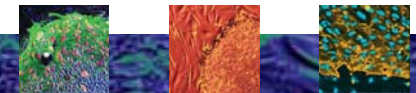
CIRM Shared Labs
Buck Institute for Age Research
Burnham Institute for Medical Research
Children's Hospital of Los Angeles
J. David Gladstone Institutes
Salk Institute
Scripps Research Institute
Stanford University
University of California, Berkeley
University of California, Davis
University of California, Irvine
University of California, Los Angeles
University of California, Riverside
University of California, San Diego
University of California, San Francisco
University of California, Santa Barbara
University of California, Santa Cruz
University of Southern California



CIRM Shared Labs



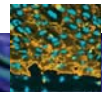
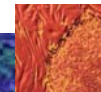
- Ray Groom tracking
- Many are complete or nearing completion
- There are no glaring problems



CIRM Major Facilities



CIRM Institutes
Sanford Consortium for Regenerative Medicine
Stanford University
University of California, Davis
University of California, Irvine
University of California, Los Angeles
University of California, San Francisco
University of Southern California
Centers of Excellence
Buck Institute for Age Research
University of California, Berkeley
CIRM Special Programs
University of California, Merced
University of California, Santa Barbara
University of California, Santa Cruz



CIRM Major Facilities



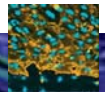
- Most are in progress and expected to open in 2010
- UC Santa Cruz had been delayed due to ecological issues.
- UC Santa Cruz, UC Berkeley & UC Santa Barbara face delays due to State financial crisis



CIRM Major Facilities: Sanford Consortium



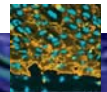
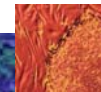
- Delays due to zoning issues (Costal Commission) have been resolved and project is ready to move forward.
- Request was made for up-front funding in order to secure a bank loan.
- CIRM cannot provide up-front funding at this time.
- Chairman Klein and Mr. Harrison are working with Sanford lawyers to create a collateral pledge agreement.

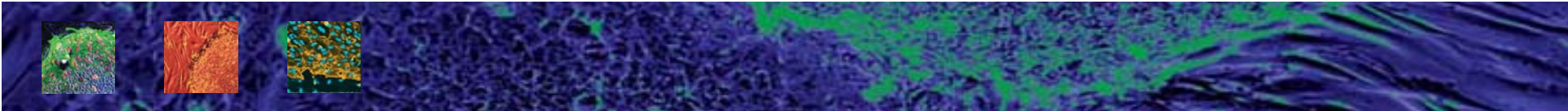


CIRM Major Facilities: Buck Institute



- NGA has not been issued
- Request was made for up-front funding in order to secure a bank loan and a collateral pledge agreement will be prepared.
- They plan to rent part of the new building to commercial stem cell enterprises (not in original application).





CIRM Major Facilities – Merced Site Visit – UC Merced – SCIF Project

March 6, 2009

CIRM Site Visit – UC Merced – SCIF Project



- Site visit was prompted by a request from UC Merced to relocate the project from the off-campus Castle site to the Science and Engineering Building

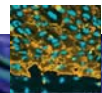
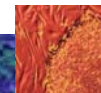


CIRM Site Visit – UC Merced – SCIF Project



CIRM site visit team:

- Alan Trounson - President
- John Robson – VP Operations
- Marie Csete – Chief Scientific Officer
- Geoff Lomax – Senior Office for Medical and Ethical Standards
- Ray Groom – Facilities consultant
- Bill Flounders – Manager, Microfabrication Lab, UC Berkeley - Clean room consultant

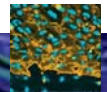


CIRM Site Visit – UC Merced – SCIF Project



UC Merced site visit team:

- Keith Alley – Provost
- Michael Chow - Senior Project Director
- Thomas Lollini - Associate Vice Chancellor
- Steve Rabedeaux – Manager, Academic Affairs
- Maria Pallavincini – Dean, Natural Sciences
- Sam Traina – Vice Chancellor, Research
- Thea Vicari – Director, Sponsored Projects office
- John White – Director, Capital Planning
- Jeff Wright – Dean, Engineering

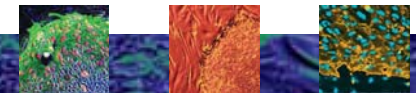


CIRM Site Visit – UC Merced – SCIF Project



Outline of site visit:

- 2 hours reviewing the plans in detail and discussing CIRM's concerns that the faculty members at UC Merced would not be able to meet the scientific goals of the approved project in lab space that is significantly smaller in gross and assignable square feet.
- 1 hour touring the planned facility and visiting labs of stem cell scientists
- 1 hour hearing from faculty members about how they will use the SCIF

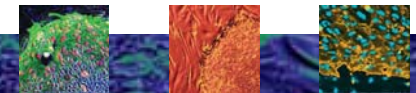


CIRM Site Visit – UC Merced – SCIF Project



Summary of findings and conclusions:

- When judged against the 5 criteria used by the FWG – sustainability and innovation, leverage, urgency, shared resources and functionality – the revised project is superior.
- The new plan is more appropriately sized and the location on campus is far superior to the Castle site.
- The new facility will accommodate the equipment requested and meet the programmatic and scientific goals described in the original application.
- In total the new site for the SCIF that is a major improvement over the original off-campus location at the Castle site.
- Determined that there is no need to re-review this application.



CIRM Site Visit – UC Merced – SCIF Project



Request for additional equipment:

- Recent estimate indicates building costs will be reduced by \$1.3M.
- Merced underestimated the costs of the essential tools in their initial application.
- A request was made to reallocate some of the CIRM funding for construction to purchase essential tools (major items of equipment).
- A letter from Merced detailing the costs and necessity of specific items that are required has been requested.

